



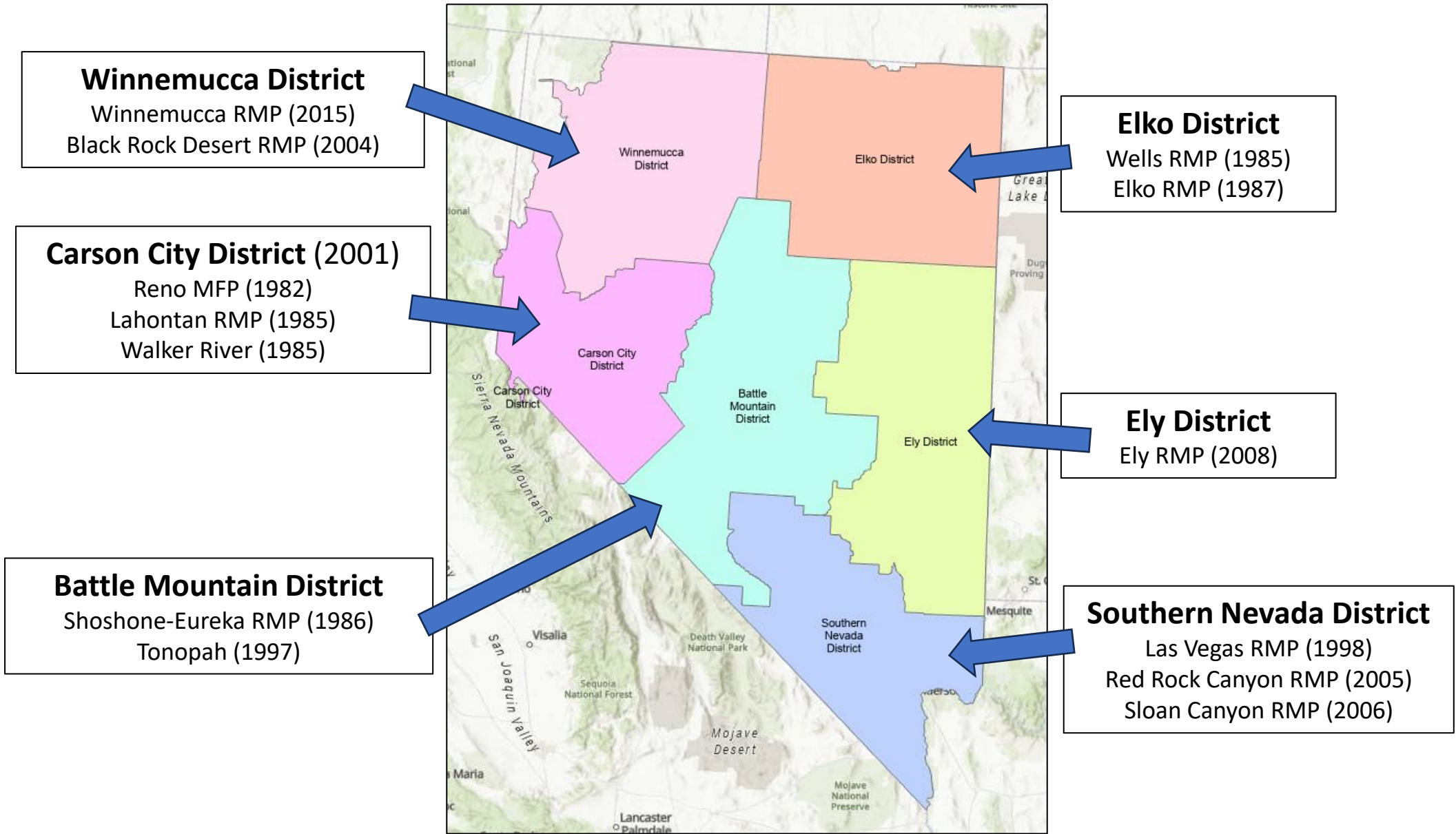
Bureau of Land Management Resource Management Planning

Under the **Federal Land Management and Policy Act**, the Bureau of Land Management is to complete resource management plans that establish “zones” or “allocations”, and set the objectives for those areas.

What is the most numerous (in acres) land use allocation on Bureau of Land Management lands in Nevada and the U.S.?

Answer: Livestock grazing.

Most resource management plans are significantly out of date in Nevada, and recent priorities have come from national planning efforts such as revisions to the 2015 greater sage-grouse plan amendments (public comment period anticipated to start in March 2024) and revisions to the 2012 Western Solar Plan amendments (comment period ends on April 18, 2024).





Pending/Authorized Solar Projects by County

County	Pending Solar	Authorized Solar	GWs
Carson City	0		0.0
Churchill	1		0.3
Clark	23	12	8.8
Esmeralda	14		20.9
Humboldt	3		0.9
Lander	5		3.5
Lincoln	1		0.5
Mineral	6	2	3.4
Nye	17	1	10.6
Washoe	1		0.2
White Pine	6		2.4

Across Nevada on Bureau of Land Management Lands there are 133 “pending” applications for renewable energy projects (wind, geothermal, solar, transmission).



Greenlink West
472-mile
transmission line



Greenlink North
235-mile
transmission line

Linking to
renewable energy
projects is a
contributing need
for these
transmission lines.



Esmeralda 7 Solar Complex (in NEPA)

Esmeralda County

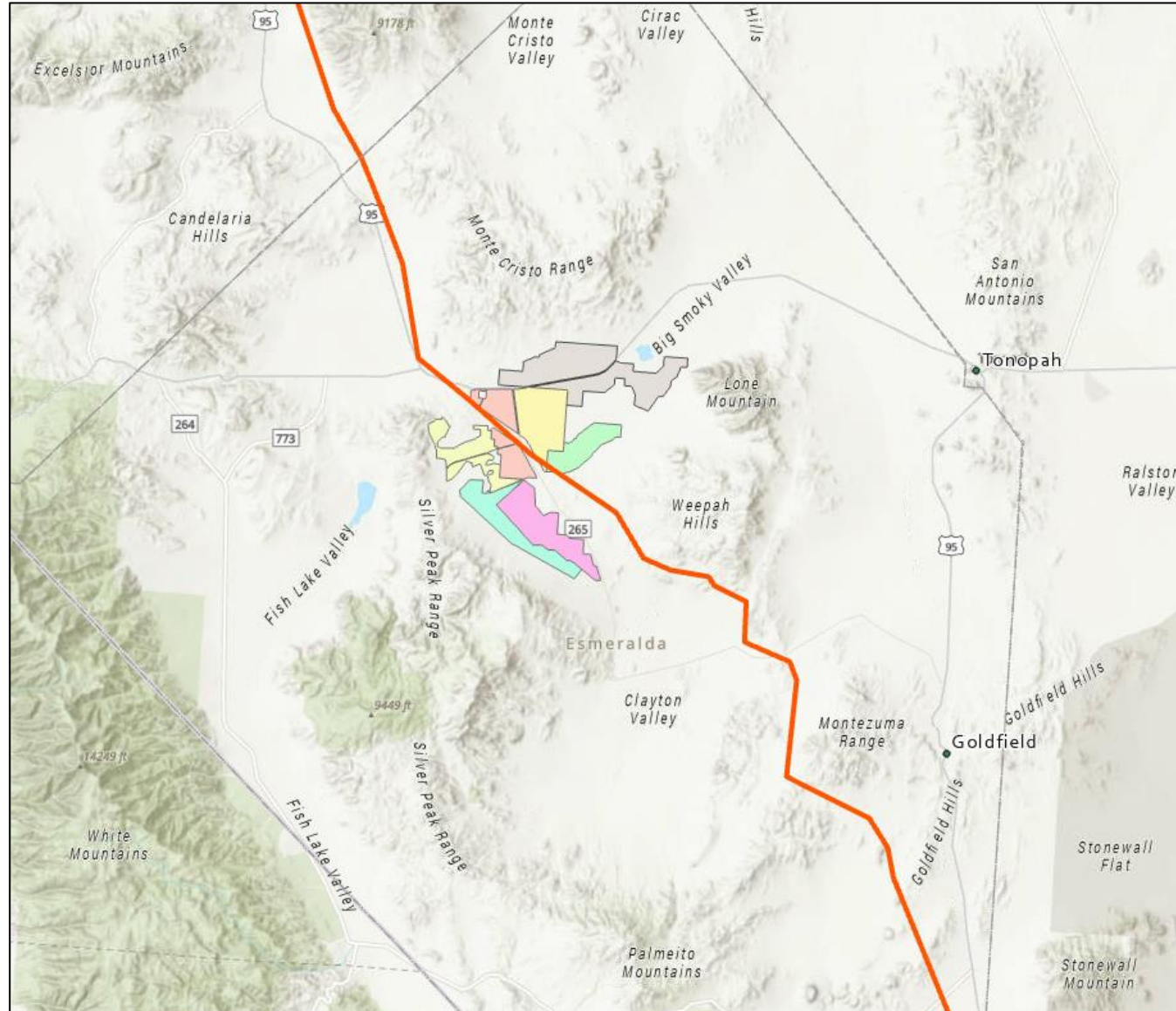
Lone Mountain Solar
Esmeralda Energy Center

Red Ridge 1 Solar
Red Ridge 2 Solar

Nivloc Solar

Gold Dust Solar

Smoky Valley Solar



This “programmatic” Environmental Impact Statement will be followed up by project-specific environmental review and public comment prior to authorization of ground disturbing activities.

These seven applications cover 62,000 acres however the actual footprint of each development, if approved, would be significantly less.



Pahrump Valley

Nye County

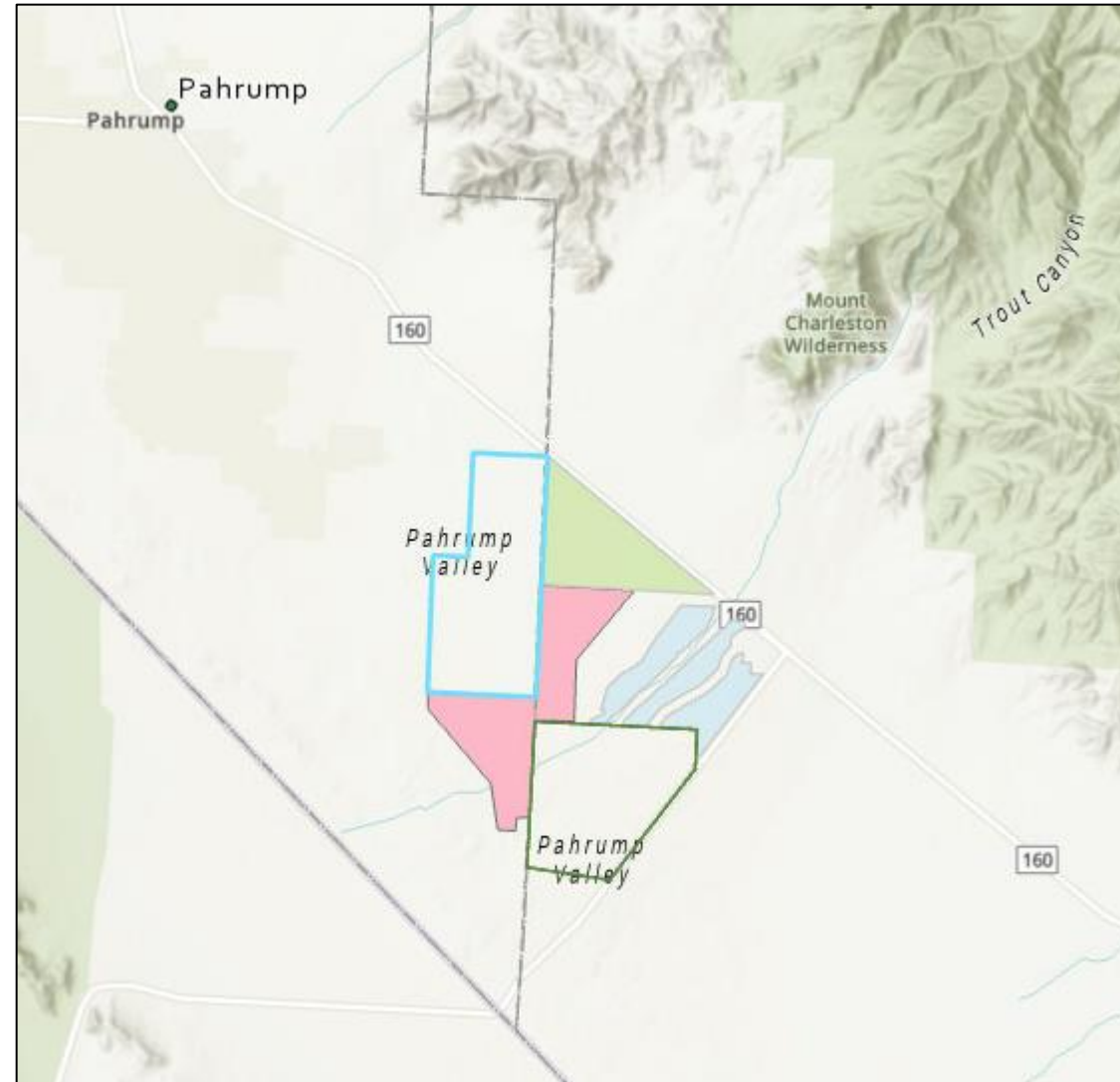
Yellow Pine Solar (authorized)

Rough Hat Solar (in NEPA)

Copper Rays Solar (pending)

Golden Current Solar (pending)

Mosey Solar (pending)





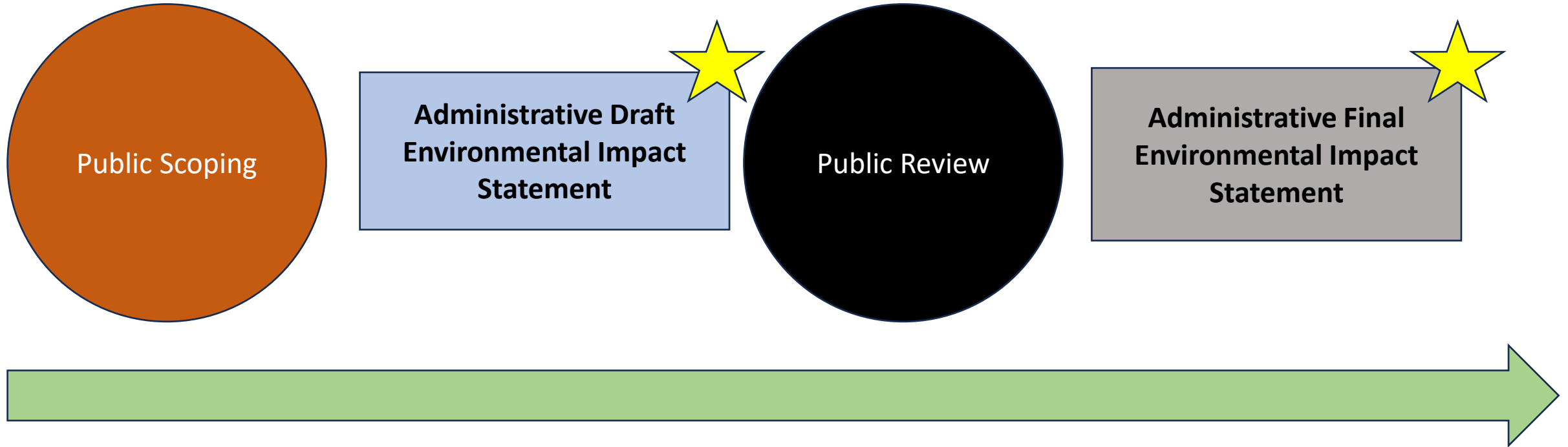
Becoming a Cooperating Agency

Cooperating Agency means “...any Federal agency (and a State, Tribal, or local agency with agreement with the lead agency)...”

“...that has **jurisdiction by law** or **special expertise** with respect to any environmental impact involved in a proposal...”



Review Opportunities



Reviews unique to Cooperating Agencies.



Learning About Pending Applications

Contact the Bureau of Land Management District in your county.

For projects in-NEPA, go to ePlanning at: <https://eplanning.blm.gov/eplanning-ui/home>

For applications that are serialized, go to the public version of LR2000 at:
<https://reports.blm.gov/content/lr2000/About-LR2000/>



U.S. Department of the Interior
Bureau of Land Management

Questions?